

THE AMAZING LYOPHILIZED APILARNIL

Premium raw material
produced by ApicolScience



SANOLABEL.COM
RO, TRANSYLVANIA, BRAȘOV, PREJMER

1. What is apitherapy?

A set of therapies and wellbeing routines that harness the vast arsenal of the beehive. The hive is an ecosystem of remarkable complexity, kept in balance by roughly **10 substances** produced by bees - from “simple” honey, which contains enzymes and organic acids, all the way to bee venom, with peptides such as melittin.

Honey • Beeswax • Propolis (Bee Glue) • Royal Jelly • Bee Bread (Perga) • Bee Pollen • Bee Venom (Aпитoxin) • Apilarnil (Drone Brood Larvae) • Queen Bee Larvae • Hive Air •



2. What is Apilarnil?

Its exceptional biological origin

Apilarnil is a beekeeping raw material obtained from **drone brood**, respectively, the juvenile forms of male honeybees. Despite the popular perception of the drone as a secondary actor in the hive, its biological role is essential: reproduction and the transmission of the colony’s most valuable genetic traits.

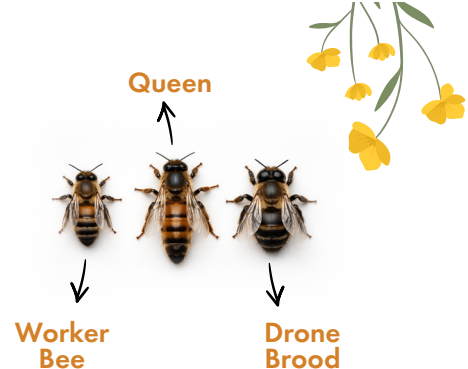
ORIGIN: THE DRONE BROOD PATHWAY



Only 1-3 hours of availability after collection.

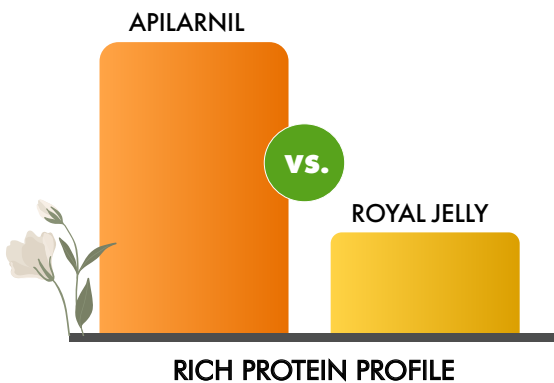
The drone: more than the hive's “lazy one”

Drones develop from unfertilised eggs and are genetically fully male. They do not collect nectar or pollen, but they participate in nuptial flights, where only the strongest, fastest, and best-adapted individuals succeed in mating with the queen. From this perspective, drone biology is one of intense natural selection - **performance** and **vitality**.



A remarkable nutritional and bioactive composition

Published data show that Apilarnil - also known as **drone brood homogenate** - contains proteins, lipids, amino acids, carbohydrates, vitamins, minerals, enzymes, and natural steroids. Beyond this composition, studies have highlighted three key biochemical differentiators:



- An extremely **rich protein profile** compared with, for example, royal jelly, supporting the rebuilding of certain systems and organs.
- The presence of an unusually **large number of enzymes** - explaining its anabolic and tonic action by supporting digestion and assimilation.
- A surprisingly diverse configuration of male and female hormones, complemented by a lipid component that supports a unique **endocrine-modulating profile**.

A natural concentrate of vitality

In functional terms, **Apilarnil** can be described as a “*natural remedy*” of the hive: a biological concentrate obtained from a developmental stage in which anabolic and regenerative potential is at its peak. That is why it is valued in formulations designed to support both male and female vitality, functional nutrition, recovery, and anti-ageing strategies. In its lyophilized form, it becomes a stable raw material, precisely dosable and easy to integrate into modern products.

3. Summary of the systems it may support



Given its complex biochemical profile, Apilarnil is associated in the specialist literature with support for multiple physiological systems:



Male endocrine function: interest centres on its natural content of steroids, amino acids, and bioactive lipids relevant to vitality, tone, and hormonal metabolism.



Female endocrine sphere: frequently included in formulations aimed at functional balance, perimenopausal comfort, and overall wellbeing support.



Adolescents: its nutritional composition makes it an ingredient of interest in formulations for growth, adaptation to effort, and functional nutrition.



Male fertility: experimental literature correlates it with potential support for spermatogenesis, antioxidant status, and reproductive function.



Circulatory component: some experimental data report favourable effects on the lipid profile, suggesting a contribution to maintaining metabolic and vascular balance.



Nervous system: existing research suggests antioxidant activity and modulation of inflammatory response, as well as significant neuroprotective potential.



Renal function optimisation: use is rather indirect, through general metabolic support and contribution to homeostasis, without being considered a therapeutic adjuvant.



In anti-ageing and adaptation strategies

Apilarnil is valuable due to its **nutritional density**, **antioxidant activity**, and **supply of compounds** involved in cellular metabolism. It is a general tonic and has an important anabolic action for athletes and those subjected to intense effort, as well as for older adults.

Anabolic
action



In the area of climatic adaptation - including thermal stress or seasonal variations - literature dedicated to bee products suggests an **adaptogenic role of bioactive compounds**, especially in contexts of increased demand.

4. Advantages of lyophilized Apilarnil



Preserves the properties of this exceptional bee product

Freeze-drying is one of the most effective methods for preserving sensitive raw materials. By removing water at low temperatures and under controlled conditions, enzymatic and microbiological degradation is reduced, and the structure of bioactive compounds is preserved better than with conventional heat-based methods. The result is a stable, concentrated raw material compatible with modern standards.



Produced 100% in Europe from European ingredients

European origin offers a clear advantage in traceability, quality control, and compliance with stringent manufacturing standards. For industrial partners and healthcare professionals, this means predictability, transparency, and trust.

Suitable for encapsulation

The freeze-dried form is ideal for **encapsulation** because it allows precise dosing, cleaner handling, improved technological stability, and easy integration into standardised formulas. This is essential for the development of premium supplements and for batch-to-batch consistency.



Precision Dosing
ideal for stable and accurate encapsulation



Preserved Bioactivity
protects sensitive nutrients through low-temperature drying



European Origin
100% traceable with strict quality standards



Maximum Versatility
adaptable for capsules, powders, and blends



Universal Application
suitable for all ages and demographics



For all ages

Through its formulation versatility, it can be integrated into products aimed at **active adults, seniors, women** and **men**, and - within certain formulas - can also be included in products intended for **adolescents**. This wide applicability makes it a raw material of great interest for high-performance products.

Versatility of use

Lyophilized Apilarnil can be used in **capsules, sachets, tablets, powder formulas, stick packs, functional blends, combinations with honey, royal jelly, propolis, pollen** or **botanical extracts**. It is a flexible raw material, adaptable to both nutritional products and wellness or anti-ageing concepts.

References (Vancouver)

1. Cianciosi D, Forbes-Hernández TY, Afrin S, Gasparri M, Reboredo-Rodríguez P, Manna PP, et al. Phenolic compounds in honey and their associated health benefits: A review. *Molecules*. 2018;23(9):2322.
2. Anjum SI, Ullah A, Khan KA, Attaullah M, Khan H, Ali H, et al. Composition and functional properties of propolis (bee glue): A review. *Saudi J Biol Sci*. 2019;26(7):1695–703.
3. Er-Rouassi H, Al-Waili N, Abou-Saleh H, Al Kamali A, El Menyiy N, El Ghouizi A, et al. Beneficial effect of bee venom and its major components on peripheral nervous system disorders. *Biomolecules*. 2023;13(5):779.
4. Sidor E, Jędras M, Teter A, Krawczyk A, Drozd M. Drone brood homogenate as natural remedy for treating health care problems: A review. *Molecules*. 2020;25(23):5699.
5. Sidor E, Krawczyk A, Bakier S. Antioxidant activity of frozen and freeze-dried drone brood homogenate as affected by stage of drone larvae development. *Antioxidants (Basel)*. 2021;10(5):639.
6. Abd El-Wahed AA, Al Naggar Y, Aboelsoued D, Shafiey EH, Tahir HE, Baeshen MN, et al. Exploring the chemical constituents and nutritive potential of apilarnil, a honeybee drone larvae-based product. *Chem Biodivers*. 2024;21(3):e202400085.
7. Sidor E, Džugan M. Drone Brood Homogenate as Natural Remedy for Treating Health Care Problem: A Scientific and Practical Approach. *Molecules*. 2020 Dec 3;25(23):5699. doi: 10.3390/molecules25235699. PMID: 33287191; PMCID: PMC7730673.
8. Sidor E, Miłek M, Zagufa G, Bocian A, Džugan M. Searching for Differences in Chemical Composition and Biological Activity of Crude Drone Brood and Royal Jelly Useful for Their Authentication. *Foods*. 2021 Sep 21;10(9):2233. doi: 10.3390/foods10092233. PMID: 34574343; PMCID: PMC8466182.



Contact

Premium bee raw materials for modern, clean, high-performance formulations. For commercial information, technical specifications, samples, and product development projects:



contact@sanolabel.com



+40 771 368 319



sanolabel.com



RO, Transylvania, Braşov,
Prejmer, Milano 12